



ATLANTA SYMPHONY YOUTH ORCHESTRA AUDITIONS

Audition materials for TUBA

Thank you for applying for the **2025-2026** ASYO Season! Included in this packet are the audition materials for this upcoming year.

These auditions will consist of two parts: preliminary auditions and seating auditions*. Those selected for participation in the ASYO will take part in the additional seating audition. After preliminary auditions, additional materials may be provided for seating auditions at a later date.

*All seating will be rotated throughout the season.

Repertoire requirements:

1. Please prepare two octaves of:
Major scales of Eb, A, D, B
Chromatic scale
Minor scale of student's choice
2. A solo piece of the student's choice.
3. The following orchestral excerpts: Please play the bracketed [] passages only.

Students are strongly encouraged to listen to recordings of the selected pieces.

Audition materials begin on next page.



Tuba

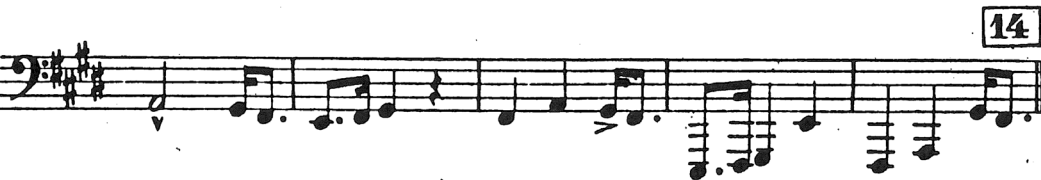
Ottorino Respighi

Fountains of Rome

The Trevi Fountain at Noon

Beginning pickup to 3 measures before Rehearsal 12 to Rehearsal 14 (quarter note = 151)

All^o vivace



Tuba

Hector Berlioz

The Damnation of Faust

Hungarian March

Beginning Rehearsal 4 to 2 measures after Rehearsal 5 (half note = 88)

4 Allegro marcato.
ff



The main musical score consists of three staves of music in bass clef. The first staff begins with a *ff* dynamic marking. The second staff also begins with a *ff* dynamic marking. The third staff contains rehearsal mark **5** and ends with a closing bracket. The music is written in a 2/4 time signature and features a variety of rhythmic patterns, including eighth and sixteenth notes, and rests.

Tuba

Richard Wagner

Die Meistersinger von Nürnberg

Overture

Beginning measure 158 to measure 188 (quarter note = 102)

Moderato, sempre largamente e pesante.

The musical score for the Tuba part consists of five staves of music in 4/4 time. The tempo and style are indicated as 'Moderato, sempre largamente e pesante.' The score includes various dynamic markings and performance instructions:

- Staff 1: *mf marc. assai.*
- Staff 2: *cresc. poco a poco*
- Staff 3: *tr molto legato* and *f*
- Staff 4: *sempre f*
- Staff 5: *più f* and *ff*

The music features a series of descending and ascending eighth-note patterns, often beamed together, with some measures containing triplets. The dynamics range from mezzo-forte to fortissimo, with a 'poco a poco' crescendo and a 'sempre f' instruction.

Tuba

Richard Wagner

Die Walküre

Movement III

Beginning pickup to 5 measures after Rehearsal 10 to downbeat after Rehearsal 12

(dotted quarter note = 78)

Vivace.

The image displays a musical score for the Tuba part, consisting of four staves of music. The music is written in bass clef with a key signature of three sharps (F#, C#, G#). The tempo is marked 'Vivace.' The score includes dynamic markings such as 'ff' (fortissimo) and rehearsal markers '11' and '12'. The music features a complex rhythmic pattern with many beamed notes and rests. The score is enclosed in large square brackets on the left and right sides.